

HRC-P6200Z 32L20

A

2 km

5-8 KM

1.

2.

2000

5-8KM

3.

4.

5.

6. IR

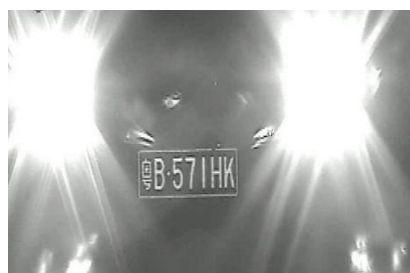
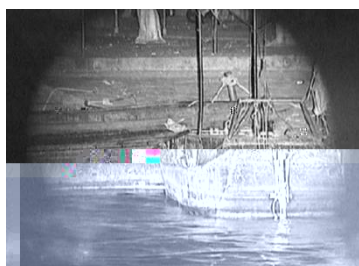
IR

7.

8. FTIS ATPC

9. 256

0.01° 8



		HRC-P6200Z 32L20		
		200	1/1.8"	CMOS
		1920*1080		
		15.6-500mm		
		32		
		3m		
		F2.8-360		
		HPLM		
		940nm	808nm/915nm/950/975nm	
		2000		
		0.2°~48°		
		20W		
		/		
		0.01		
		50kg		
		360°	-45°	45°
		0.01°/	30°/	0.01°/ 17°/
		256		
		RS-422/RS-485		
		PELCO-D/P		
		1 RJ45 10M / 100M/1000M		
		DC24V		
		-45	70	
		40Kg		
		100W	150W	
		IP67		
		657(L)x378(W)x610(H)		

